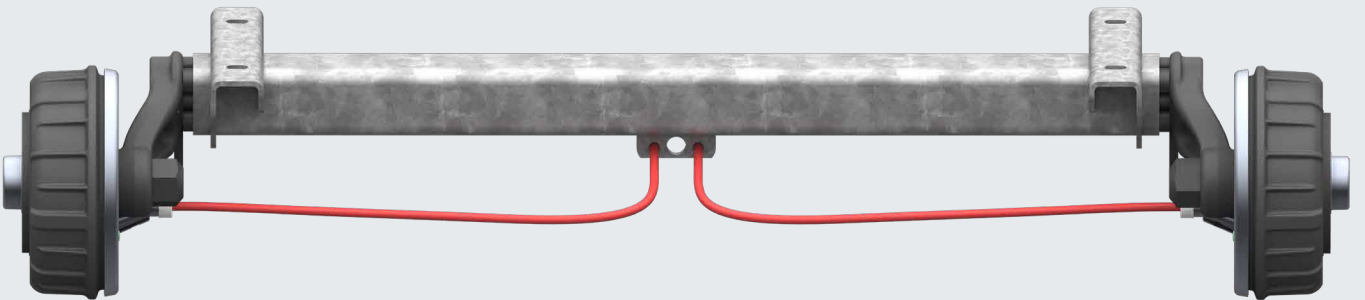


AL-KO

QUALITY FOR LIFE

SQUARE RUBBER SUSPENSION BRAKED AXLES WITH BOLTED AL-KO WHEEL BRAKE

Reference AL-KO Technology Paderborn



AL-KO VEHICLE TECHNOLOGY

QUALITY FOR LIFE

OUR DRIVE: HOW WE THINK ABOUT QUALITY

Our drive is to improve people's lives through quality. From our roots in a small village forge to a global corporation, our DNA has always remained the same: Quality for life.



TRAILER COMPONENTS IN THE LIGHT SECTOR

In the commercial trailer sector we offer premium products such as axles, hitches, overrun devices, cable winches and brakes. The focus is on durability, ergonomics and safety.

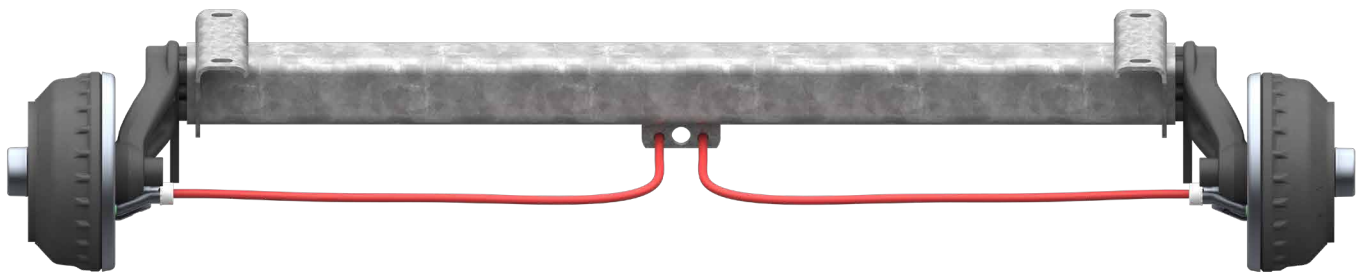
RUBBER SUSPENSION BRAKED AXLE BASIC

1,050 kg; 112x5



TECHNOLOGY

Model:	BASIC	Wheel brake:	2051	Wheel connection:	112x5
Axle type:	CB1050	Suspension:	Square rubber suspension	Wheel bearing:	Compact bearings
Axle load:	EA 1,050 kg TA 2,100 kg	Swing arm:	160 mm	Centre hole rim:	min. 57 mm



AAA = AL-KO Automatic Adjustment
(automatic adjustment of the brake pads)

SAP: ACHSE KPL CB1050 EA 2051A

OHF (B) in mm	BC (A) in mm	Single axle Axle complete Wheel bolts Ball M 12x1.5		Tandem front axle Axle complete Wheel bolts Ball M 12x1.5		Rear axle Axle complete Wheel bolts Ball M 12x1.5		50.4	–	25	10
		without AAA	with AAA	without AAA	with AAA	without AAA	with AAA				
1,250	800	4023369	4023381	4023393	4023405	4023417	4023429				
1,350	900	4023370	4023382	4023394	4023406	4023418	4023430	51.3	–	25	10
1,450	1,000	4023371	4023383	4023395	4023407	4023419	4023431	52.2	–	25	10
1,550	1,100	4023372	4023384	4023396	4023408	4023420	4023432	53.1	–	25	10
1,650	1,200	4023373	4023385	4023397	4023409	4023421	4023433	54.0	–	25	10
1,750	1,300	4023374	4023386	4023398	4023410	4023422	4023434	54.9	–	25	10
1,850	1,400	4023375	4023387	4023399	4023411	4023423	4023435	55.8	–	25	10
1,950	1,500	4023376	4023388	4023400	4023412	4023424	4023436	56.7	–	25	10
2,050	1,600	4023377	4023389	4023401	4023413	4023425	4023437	57.6	–	25	10
2,150	1,700	4023378	4023390	4023402	4023414	4023426	4023438	58.5	–	25	10
2,250	1,800	4023379	4023391	4023403	4023415	4023427	4023439	59.4	–	25	10
2,350	1,900	4023380	4023392	4023404	4023416	4023428	4023440	60.3	–	25	10

SCOPE OF SUPPLY

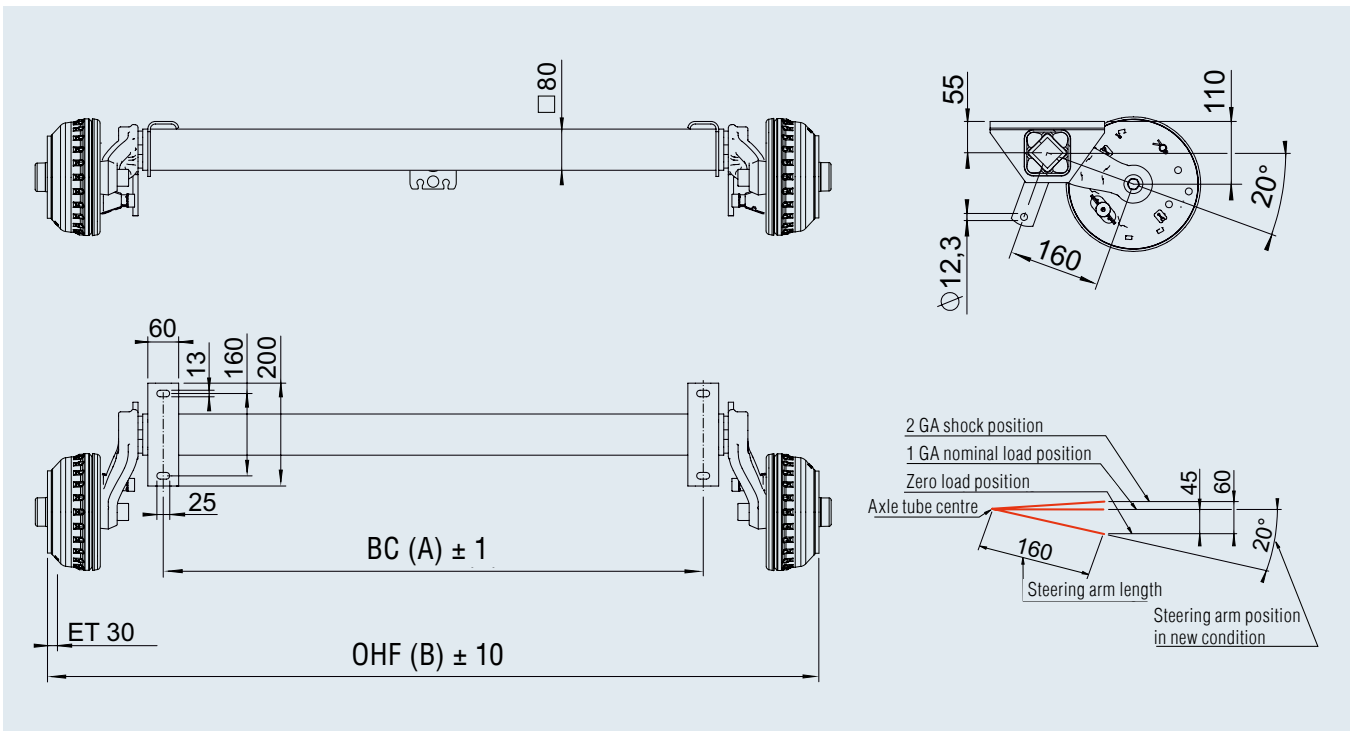
- I Single axle adapter bracket welded on
- I Welded-on shock absorber brackets
- I Compensation profile for single axle supplied
- I Bowden cables loose
- I Wheel bolts loose

Separate order for tandem

- I Tandem adapter bracket, bolt-on 249 236
- I Tandem compensation 238 576

SURFACE TREATMENT

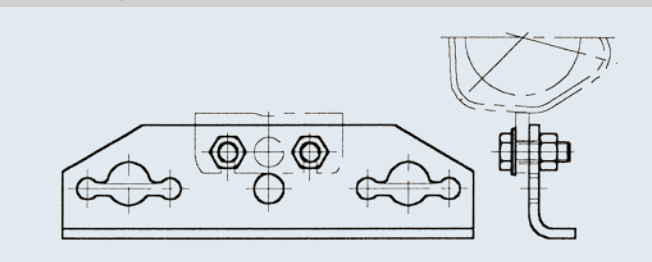
- I Axle profile hot-dip galvanised
- I Wheel brake galvanised
- I Axle link cataphoretically coated



Accessories for tandem

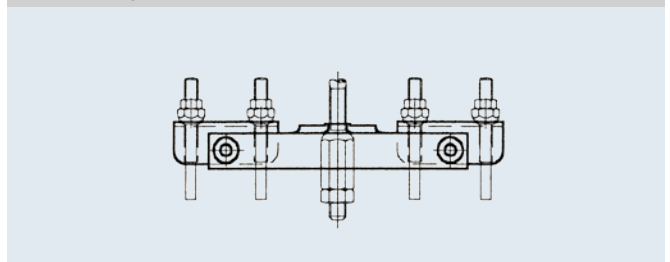
Tandem adapter bracket, bolt-on

Part no. **249 236**



Tandem compensation

Part no. **238 576**



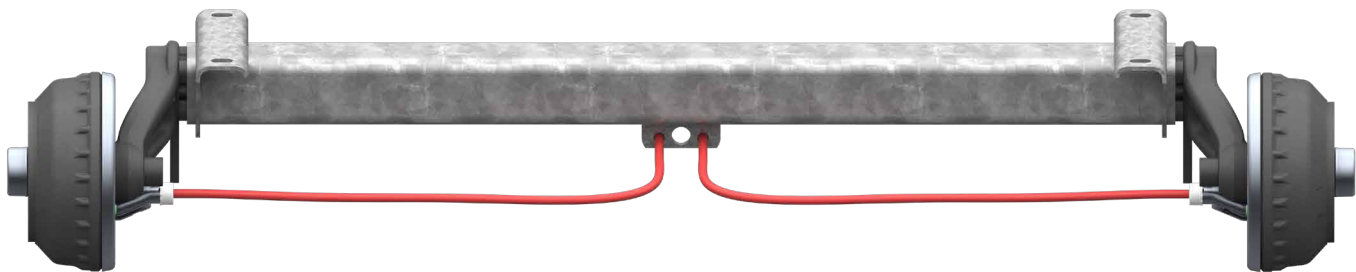
RUBBER SUSPENSION BRAKED AXLE BASIC

1,350 kg; 112 x 5



TECHNOLOGY

Model:	BASIC	Wheel brake:	2051	Wheel connection:	112x5
Axle type:	CB1350	Suspension:	Square rubber suspension	Wheel bearing:	Compact bearings
Axle load:	EA 1,350 kg TA 2,700 kg	Swing arm:	160 mm	Centre hole rim:	min. 57 mm



AAA = AL-KO Automatic Adjustment
(automatic adjustment of the brake pads)

SAP: ACHSE KPL CB1350 EA 2051A

OHF (B) in mm	BC (A) in mm	Single axle Axle complete Wheel bolts Ball M 12x1.5		Tandem front axle Axle complete Wheel bolts Ball M 12x1.5		Rear axle Axle complete Wheel bolts Ball M 12x1.5		50.4	–	25	10
		without AAA	with AAA	without AAA	with AAA	without AAA	with AAA				
1,250	800	4023441	4023453	4023465	4023477	4023489	4023501				
1,350	900	4023442	4023454	4023466	4023478	4023490	4023502				
1,450	1,000	4023443	4023455	4023467	4023479	4023491	4023503				
1,550	1,100	4023444	4023456	4023468	4023480	4023492	4023504				
1,650	1,200	4023445	4023457	4023469	4023481	4023493	4023505				
1,750	1,300	4023446	4023458	4023470	4023482	4023494	4023506				
1,850	1,400	4023447	4023459	4023471	4023483	4023495	4023507				
1,950	1,500	4023448	4023460	4023472	4023484	4023496	4023508				
2,050	1,600	4023449	4023461	4023473	4023485	4023497	4023509				
2,150	1,700	4023450	4023462	4023474	4023486	4023498	4023510				
2,250	1,800	4023451	4023463	4023475	4023487	4023499	4023511				
2,350	1,900	4023452	4023464	4023476	4023488	4023500	4023512				

SCOPE OF SUPPLY

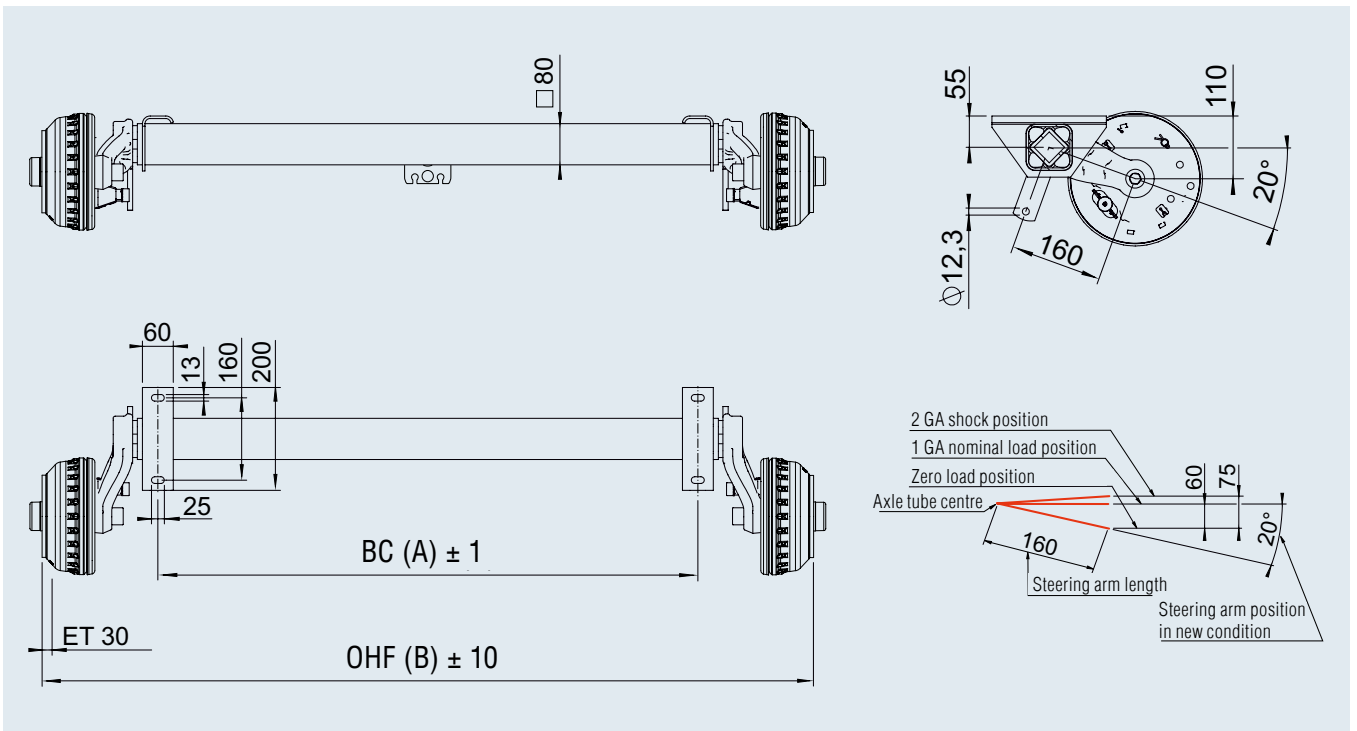
- I Single axle adapter bracket welded on
- I Welded-on shock absorber brackets
- I Compensation profile for single axle supplied
- I Bowden cables loose
- I Wheel bolts loose

Separate order for tandem

- I Tandem adapter bracket, bolt-on 249 236
- I Tandem compensation 238 576

SURFACE TREATMENT

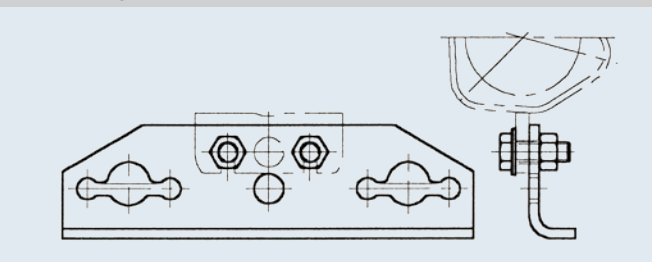
- I Axle profile hot-dip galvanised
- I Wheel brake galvanised
- I Axle link cataphoretically coated



Accessories for tandem

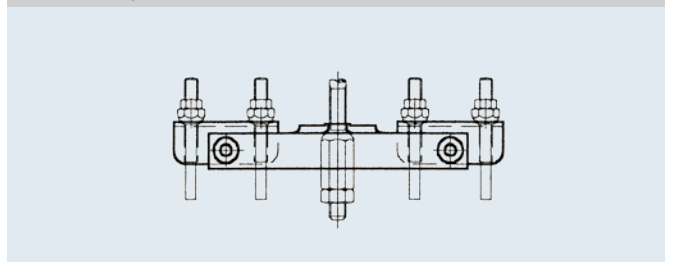
Tandem adapter bracket, bolt-on

Part no. **249 236**



Tandem compensation

Part no. **238 576**



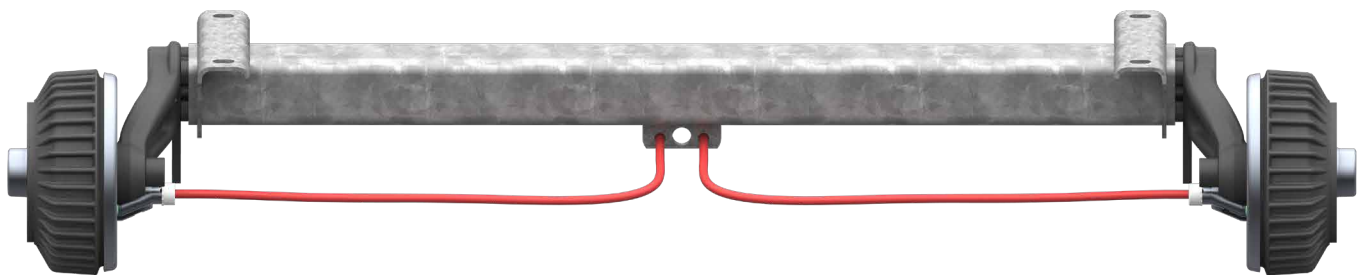
RUBBER SUSPENSION BRAKED AXLE BASIC

1,500 kg; 112x5



TECHNOLOGY

Model:	BASIC	Wheel brake:	2051	Wheel connection:	112x5
Axle type:	CB1500	Suspension:	Square rubber suspension	Wheel bearing:	Compact bearings
Axle load:	EA 1,500 kg TA 3,000 kg	Swing arm:	160 mm	Centre hole rim:	min. 57 mm



AAA = AL-KO Automatic Adjustment
(automatic adjustment of the brake pads)

SAP: ACHSE KPL CB1500 EA 2051A

OHF (B) in mm	BC (A) in mm	Single axle Axle complete Wheel bolts Ball M 12x1.5		Tandem front axle Axle complete Wheel bolts Ball M 12x1.5		Rear axle Axle complete Wheel bolts Ball M 12x1.5		T	□	□	□
		without AAA	with AAA	without AAA	with AAA	without AAA	with AAA				
1,250	800	4023513	4023525	4023537	4023549	4023561	4023573	52.9	–	25	10
1,350	900	4023514	4023526	4023538	4023550	4023562	4023574	53.8	–	25	10
1,450	1,000	4023515	4023527	4023539	4023551	4023563	4023575	54.7	–	25	10
1,550	1,100	4023516	4023528	4023540	4023552	4023564	4023576	55.6	–	25	10
1,650	1,200	4023517	4023529	4023541	4023553	4023565	4023577	56.5	–	25	10
1,750	1,300	4023518	4023530	4023542	4023554	4023566	4023578	57.4	–	25	10
1,850	1,400	4023519	4023531	4023543	4023555	4023567	4023579	58.3	–	25	10
1,950	1,500	4023520	4023532	4023544	4023556	4023568	4023580	59.2	–	25	10
2,050	1,600	4023521	4023533	4023545	4023557	4023569	4023581	60.1	–	25	10
2,150	1,700	4023522	4023534	4023546	4023558	4023570	4023582	61.0	–	25	10
2,250	1,800	4023523	4023535	4023547	4023559	4023571	4023583	61.9	–	25	10
2,350	1,900	4023524	4023536	4023548	4023560	4023572	4023584	62.8	–	25	10

SCOPE OF SUPPLY

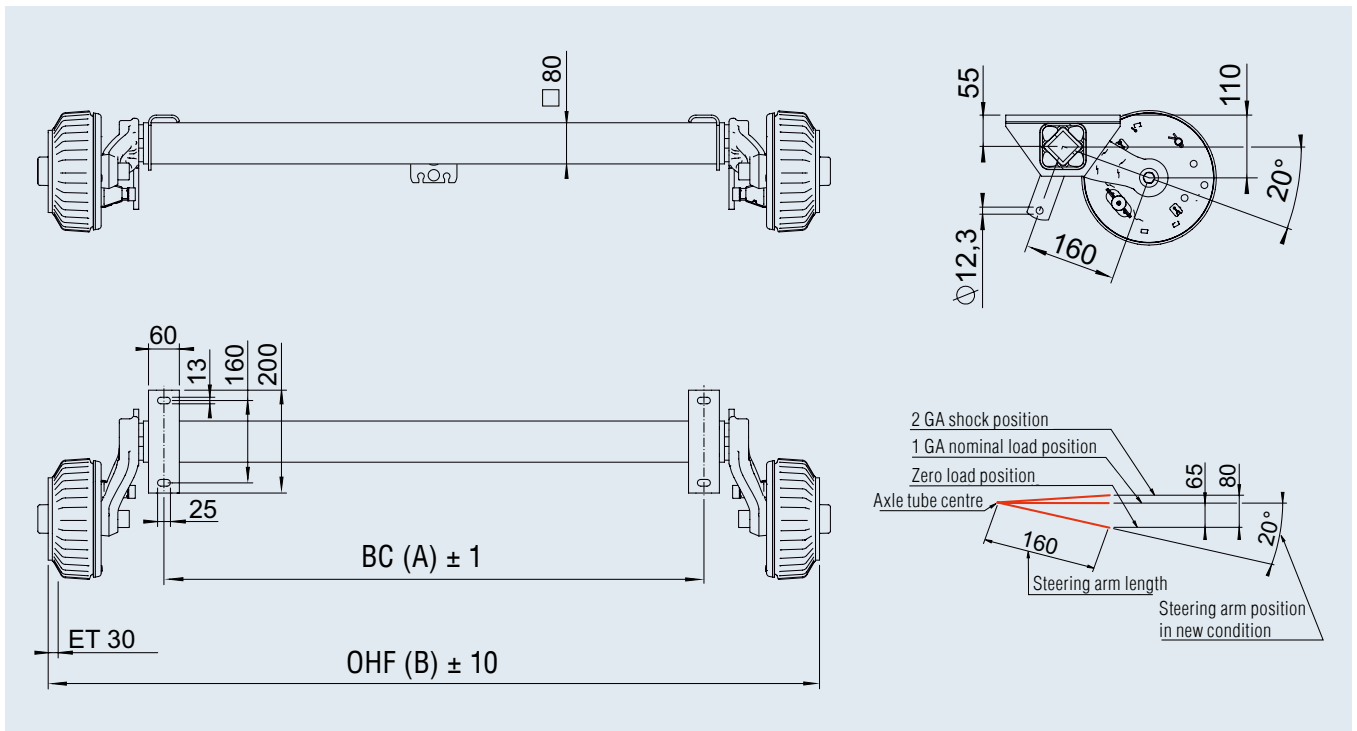
- I Single axle adapter bracket welded on
- I Welded-on shock absorber brackets
- I Compensation profile for single axle supplied
- I Bowden cables loose
- I Wheel bolts loose

Separate order for tandem

- I Tandem adapter bracket, bolt-on 249 236
- I Tandem compensation 238 576

SURFACE TREATMENT

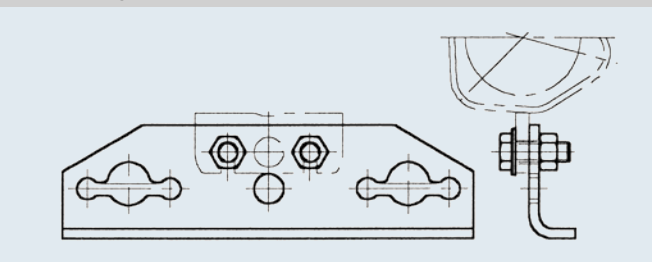
- I Axle profile hot-dip galvanised
- I Wheel brake galvanised
- I Axle link cataphoretically coated



Accessories for tandem

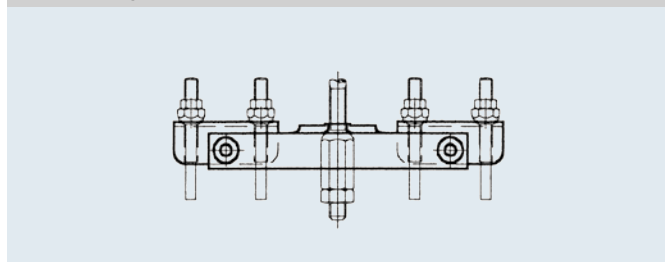
Tandem adapter bracket, bolt-on

Part no. **249 236**



Tandem compensation

Part no. **238 576**



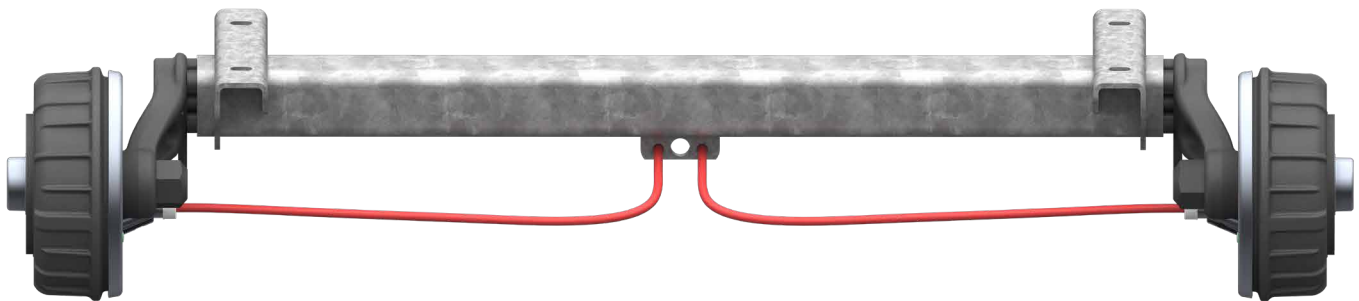
RUBBER SUSPENSION BRAKED AXLE BASIC

1,800 kg; 112x5



TECHNOLOGY

Model:	BASIC	Wheel brake:	2361	Wheel connection:	112x5
Axle type:	CB1800	Suspension:	Square rubber suspension	Wheel bearing:	Compact bearings
Axle load:	EA 1,800 kg TA 3,500 kg	Swing arm:	160 mm	Centre hole rim:	min. 63 mm



AAA = AL-KO Automatic Adjustment
(automatic adjustment of the brake pads)

SAP: ACHSE KPL CB1800 EA 2361A

OHF (B) in mm	BC (A) in mm	Single axle Axle complete Wheel bolts Ball M 12x1.5		Tandem front axle Axle complete Wheel bolts Ball M 12x1.5		Rear axle Axle complete Wheel bolts Ball M 12x1.5		T	□	□	□
		without AAA	with AAA	without AAA	with AAA	without AAA	with AAA				
1,290	800	4023585	4023597	4023609	4023621	4023633	4023645	65.2	–	25	10
1,390	900	4023586	4023598	4023610	4023622	4023634	4023646	66.1	–	25	10
1,490	1,000	4023587	4023599	4023611	4023623	4023635	4023647	67	–	25	10
1,590	1,100	4023588	4023600	4023612	4023624	4023636	4023648	67.9	–	25	10
1,690	1,200	4023589	4023601	4023613	4023625	4023637	4023649	68.8	–	25	10
1,790	1,300	4023590	4023602	4023614	4023626	4023638	4023650	69.7	–	25	10
1,890	1,400	4023591	4023603	4023615	4023627	4023639	4023651	70.6	–	25	10
1,990	1,500	4023592	4023604	4023616	4023628	4023640	4023652	71.5	–	25	10
2,090	1,600	4023593	4023605	4023617	4023629	4023641	4023653	72.4	–	25	10
2,190	1,700	4023594	4023606	4023618	4023630	4023642	4023654	73.3	–	25	10
2,290	1,800	4023595	4023607	4023619	4023631	4023643	4023655	74.2	–	25	10
2,390	1,900	4023596	4023608	4023620	4023632	4023644	4023656	75.1	–	25	10

SCOPE OF SUPPLY

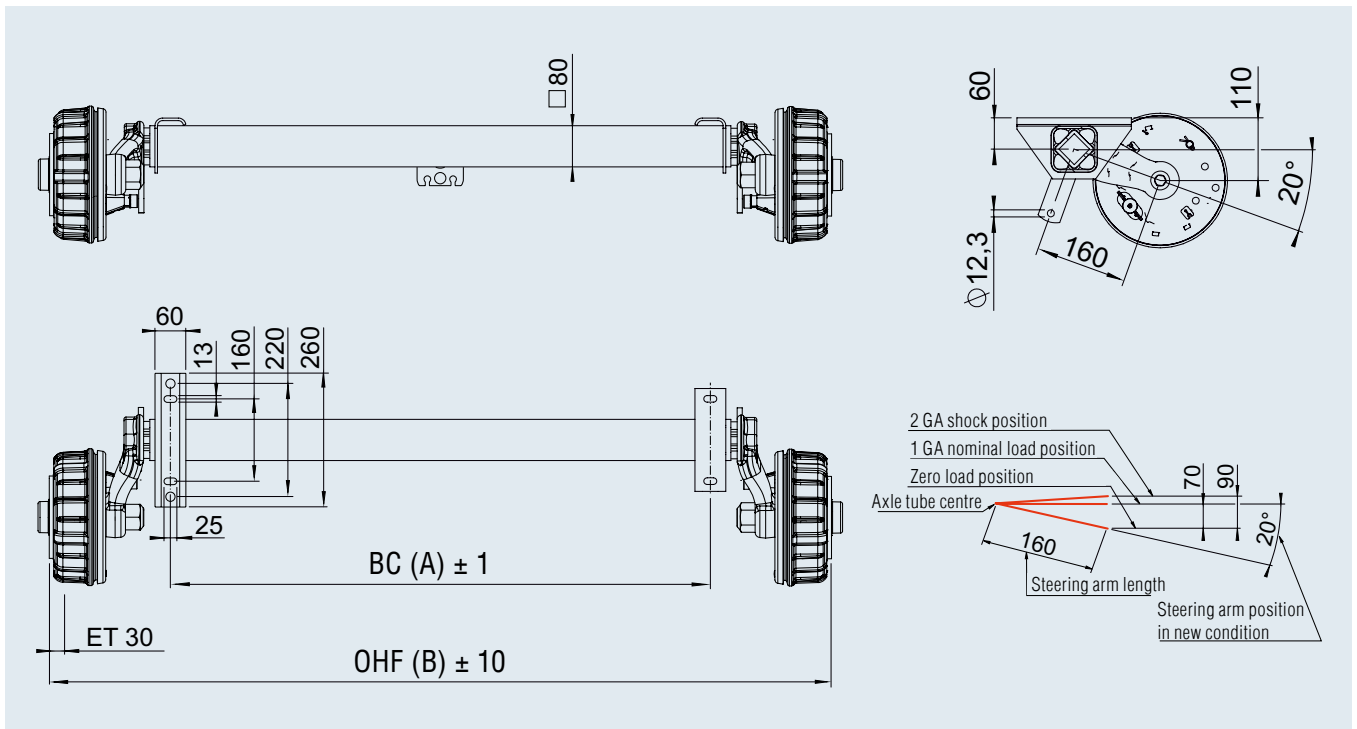
- I Single axle adapter bracket welded on
- I Welded-on shock absorber brackets
- I Compensation profile for single axle supplied
- I Bowden cables loose
- I Wheel bolts loose

Separate order for tandem

- I Tandem adapter bracket, bolt-on 249 236
- I Tandem compensation 238 576

SURFACE TREATMENT

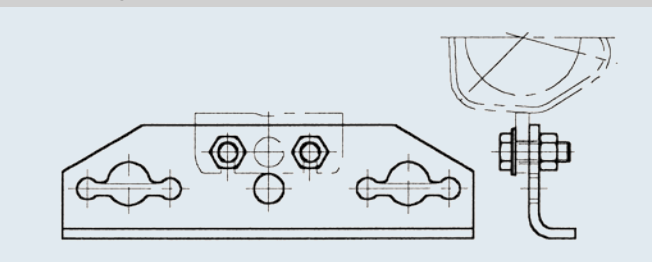
- I Axle profile hot-dip galvanised
- I Wheel brake galvanised
- I Axle link cataphoretically coated



Accessories for tandem

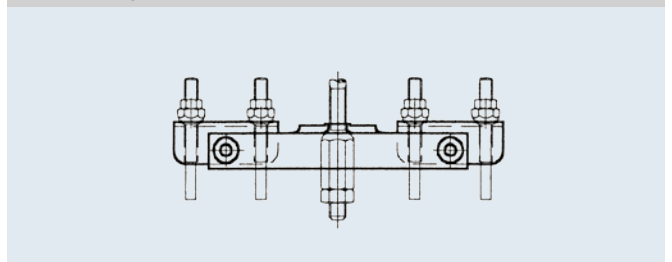
Tandem adapter bracket, bolt-on

Part no. **249 236**



Tandem compensation

Part no. **238 576**



PROFI LONGLIFE AXLE BOWDEN CABLES

Advantages

AL-KO offers the highest quality for vehicle trailers

Trailers need to be able to do their job reliably come wind or weather, under all operating conditions.

The Bowden cables that are decisive for the brake function have to withstand a lot of stress.

AL-KO sets a new standard by using long-life Bowden cables. This achieves the longest possible service life with improved function. The optimised design means that they can withstand even the most adverse environmental effects without any problems.

YOUR BENEFITS

Perfect protection

I The metal-reinforced internal spiral is protected by a **polymer sheath made of PA 12** (polyamide 12). This material is extremely resistant to salt water as well as other substances. This material is even used successfully as protective sheathing for offshore pipelines of oil platforms as well as for petrol pipelines.

I The end pieces of the Bowden cables are additionally provided with a **zinc/nickel coating**, so that rust simply cannot gain a foothold.

I The transition from the jacketed steel wire to the cable is provided with an **exactly fitting elastomer grommet**. This effectively prevents penetration of water, salt and other aggressive, harmful liquids.

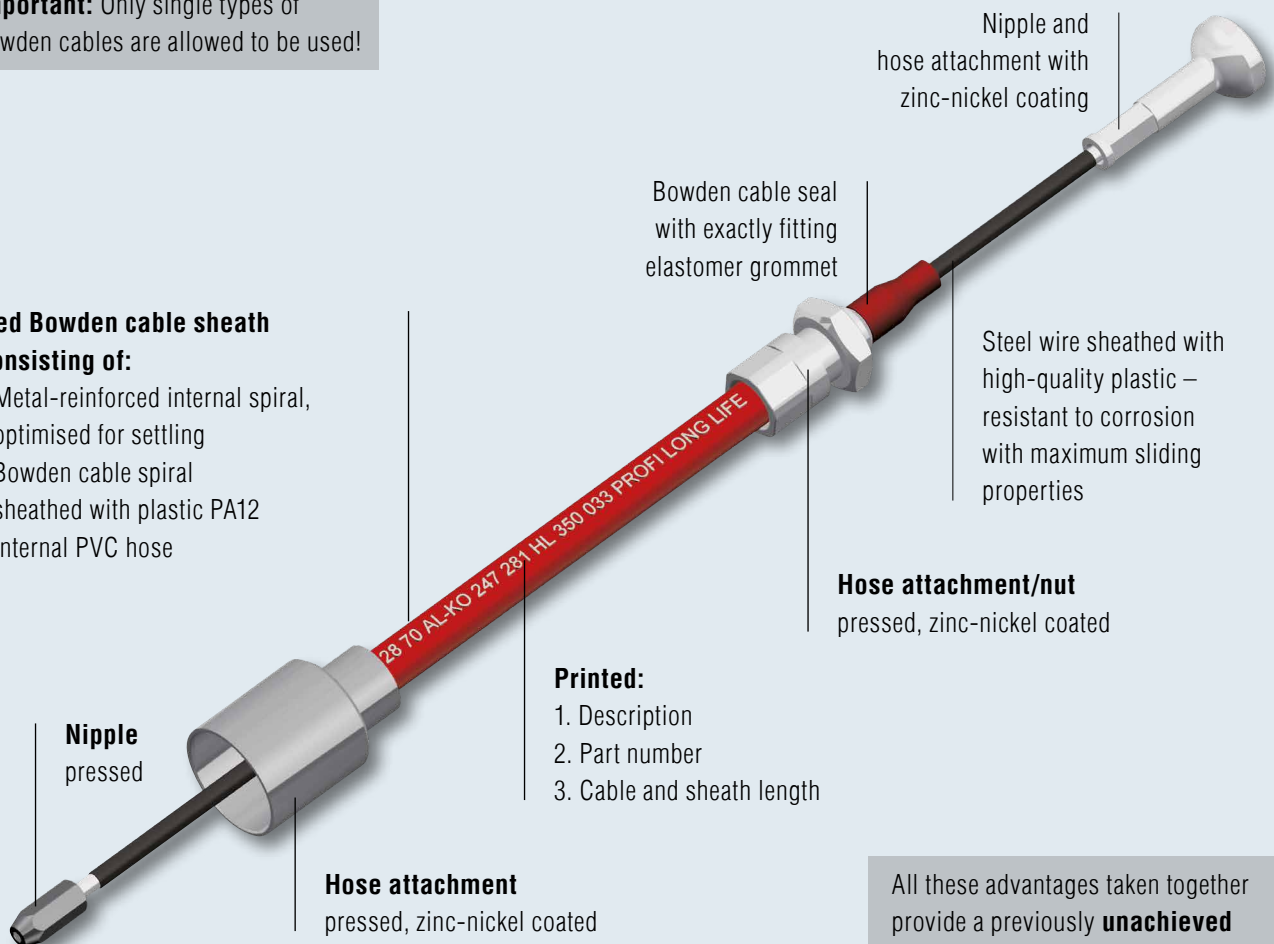
Up to 5% better efficiency

In turn, the steel cable sheathed with PA 12 runs within another PVC hose. **This means plastic runs on plastic**, enabling the sliding properties to be optimised as well. In simple terms: efficiency is boosted by up to 5% across the entire temperature range.

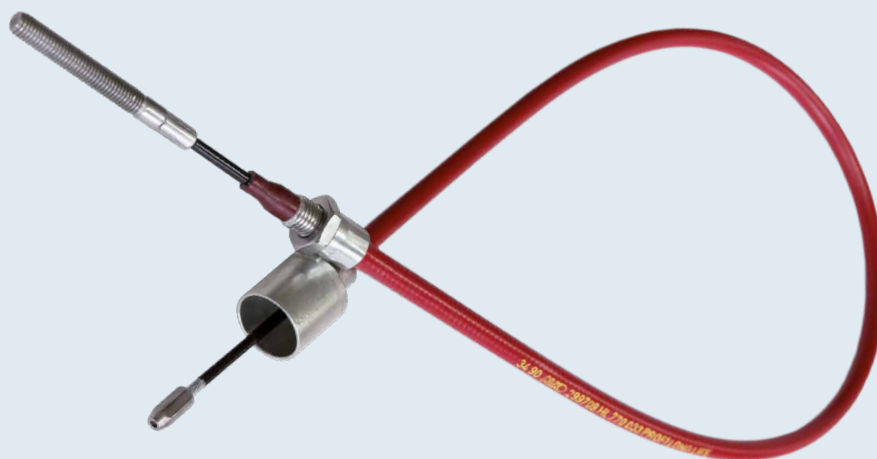
Important: Only single types of Bowden cables are allowed to be used!

Red Bowden cable sheath consisting of:

- I Metal-reinforced internal spiral, optimised for settling
- I Bowden cable spiral sheathed with plastic PA12
- I Internal PVC hose




All these advantages taken together provide a previously **unachieved standard for vehicle trailers.**



Variant with thread

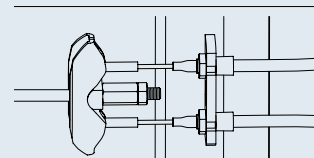
SAP: BOWDZ COM 350/546 PROFI LONG LIFE

Quick mounting 1636G, 1637, 2051, 2361

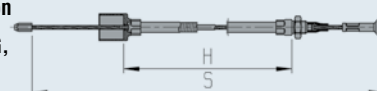
OHF mm from to	Without fixing bolts	Sheath H mm	Cable S mm	
Single axle trailer				
up to 940	247 281	350	546	20
940 – 1260	247 282	530	726	20
1260 – 1680	247 283	770	966	20
1680 – 1880	247 284	890	1,086	20
1880 – 2100	247 285	1,020	1,216	20
2100 – 2340	247 286	1,130	1,326	20
Tandem front axle				
up to 1110	247 281	350	546	20
1110 – 1430	247 282	530	726	20
1430 – 1850	247 283	770	966	20
1850 – 2050	247 284	890	1,086	20
2050 – 2270	247 285	1,020	1,216	20
2270 – 2510	247 286	1,130	1,326	20
Tandem rear axle centre distance up to 700 mm				
up to 1620	247 286	1,130	1,326	20
1620 – 2020	247 287	1,320	1,516	20
2020 – 2360	247 288	1,430	1,626	20
2360 – 2720	247 289	1,620	1,816	20
2720 – X	247 290	1,790	1,986	20
Tandem rear axle centre distance > 700 mm				
up to 1470	247 286	1,130	1,326	20
1470 – 1870	247 287	1,320	1,516	20
1870 – 2210	247 288	1,430	1,626	20
2210 – 2570	247 289	1,620	1,816	20
2570 – X	247 290	1,790	1,986	20



**Quick-mounting Bowden cable
(1636G, 1637, 2051, 2361)**



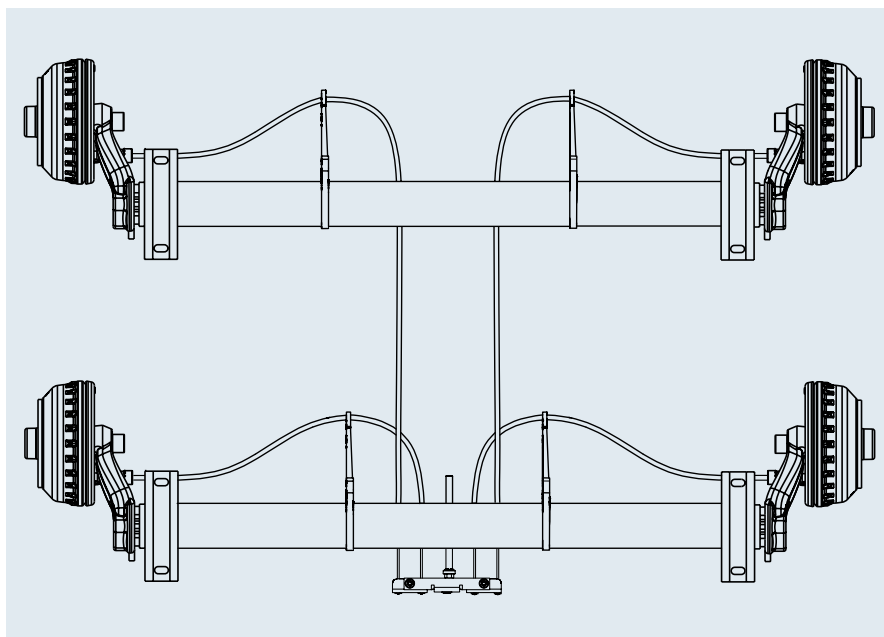
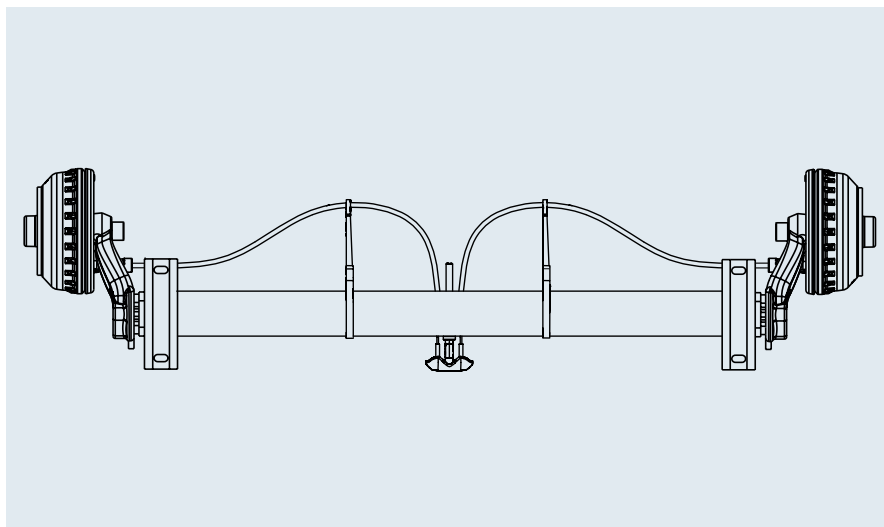
**Quick mounting on the
Bowden cable compensation
bar for wheel brakes 1636G,
1637, 2051, 2361**



BOWDEN CABLE HOLDERS

YOUR BENEFITS

- | Moisture that penetrates can escape.
- | Freezing up is prevented.
- | The function of the brake system is permanently maintained, especially when using PROFI long-life axle Bowden cables.
- | No Bowden cable sagging.
- | No oscillation, and therefore no undesired gentle braking while driving.



SAP: BOWDENZUGHALTER ACHSPR 97/45°

Part No. Units	Part No. 10 units packaged	for axles	Suspension	Axle profile Ø mm	Colour			
691 892	1 222 116	AL-KO	Square	80 mm	black	0.6	10	100

BOLT-ON TANDEM ADAPTER BRACKET

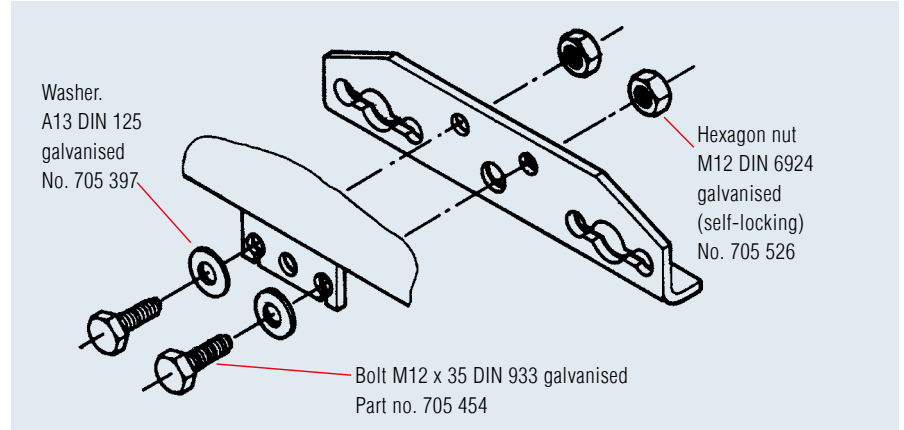
Tandem adapter bracket, bolt-on

Hot-dip galvanised, up to 3,500 kg

Part No.: 249 236

Attention!

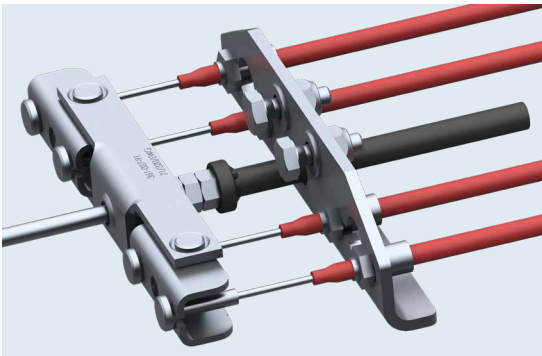
Install adapter bracket behind the axle in the driving direction
(old adapter bracket in front of the axle).



Tandem compensation

Hot-dip galvanised, up to 3,500 kg

Part No.: 238 576



WHEEL BOLTS AND WHEEL NUTS

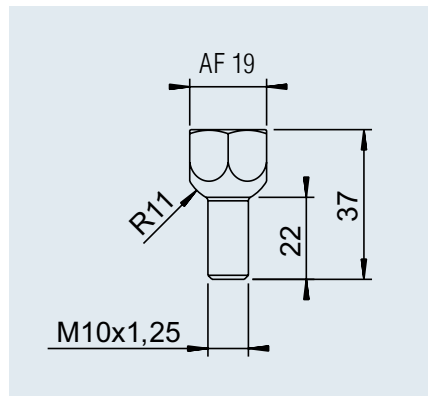
TECHNOLOGY

Wheel attachment: Attachment for safe operation is largely dependent on matching the hubs and wheel connections as well as using the right fastening components with the prescribed tightening torque.

It is essential to coordinate the data of the axle, i.e. wheel connection and offset as well as the data of the wheel bolt and tightening torque, with your rim and tyre manufacturer.

SURFACE TREATMENT

I galvanised



Ball-head wheel bolt M10 x 1.25

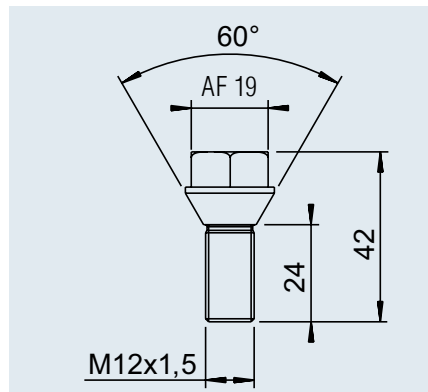
SAP: SHR RAD- KUG- M10X1,25X22

Part No. 208 892 00 10

Wrench size AF19

Bolt quality 8.8

Maximum permitted tightening torque 52 Nm



Taper-head wheel bolt M12 x 1.5

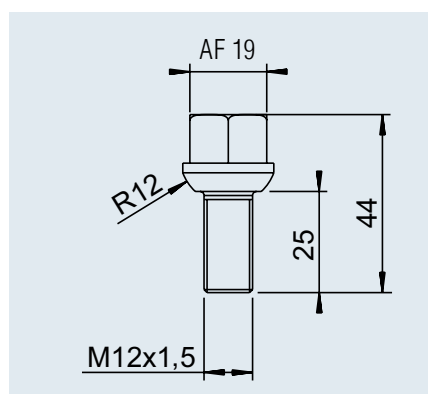
SAP: SHR RAD- KEG- M12X1,5X24

Part No. 208 167 00 18

Wrench size AF19

Bolt quality 8.8

Maximum permitted tightening torque 90 Nm



Ball-head wheel bolt M12 x 1.5

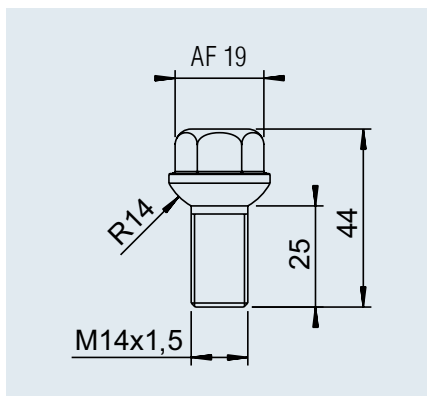
SAP: SHR RAD- KUG- M12X1,5X25

Part No. 208 167 00 20

Wrench size AF19

Bolt quality 8.8

Maximum permitted tightening torque 90 Nm



Ball-head wheel bolt M14 x 1.5

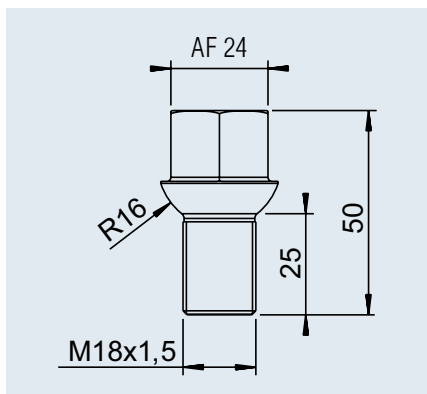
SAP: SHR RAD- KUG- M14X1,5X25 ZN12A

Part No. 208 167 00 02

Wrench size AF19

Bolt quality 8.8

Maximum permitted tightening torque 150 Nm



Ball-head wheel bolt M18 x 1.5

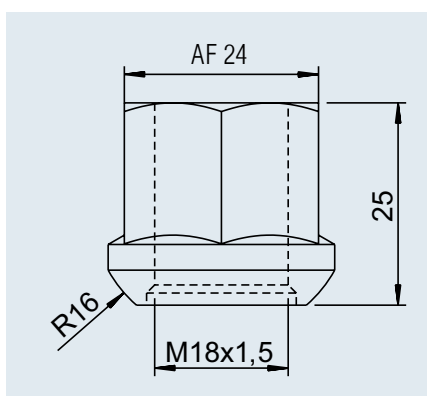
SAP: SHR RAD- KUG- M18X1,5X25

Part No. 218 568 00 06

Wrench size AF24

Bolt quality 8.8

Maximum permitted tightening torque 325 Nm



Wheel nut M18 x 1.5

SAP: MU 74361-A18- 8 A3B (M18X1,5)

Part No. 701 202

Wrench size AF24

Bolt quality 8.8

Maximum permitted tightening torque 325 Nm

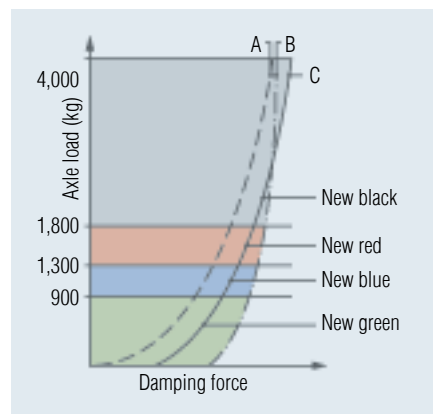
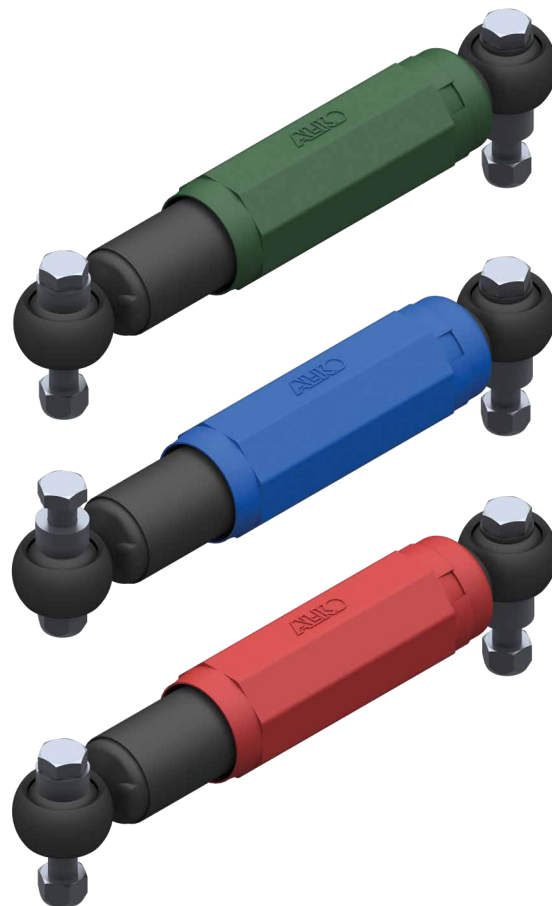
AXLE SHOCK ABSORBERS – OCTAGON PLUS

YOUR BENEFITS

- I AL-KO Octagon shock absorbers are specifically set for a particular weight range (see curve C).
- I They thus optimally improve the towing properties of the trailer.

Colour	Single axle	Tandem axle
green	900 kg	1,600 kg
blue	1,350 kg	2,700 kg
red	2,000 kg	3,500 kg

To rule out any mix-ups, the different weight ranges are identified with different colours.



- A** Damping characteristic of AL-KO rubber suspension axle
- B** Damping characteristic of previous shock absorbers
- C** Damping characteristic optimised by AL-KO Octagon shock absorbers

OPTIMAL DAMPING

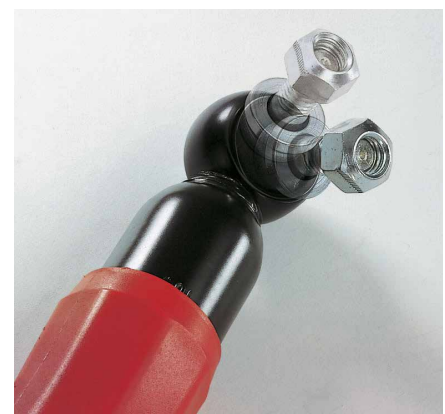
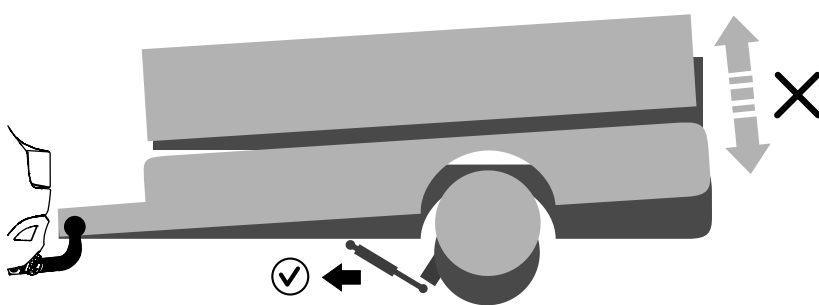
What every driver of a vehicle combination dreads: oscillation of the trailer body on uneven roads. The AL-KO Octagon shock absorber immediately reduces these dangerous bumping movements.

THIS MEANS:

- I Greater driving stability
- I Greater braking stability
- I Optimum ground contact

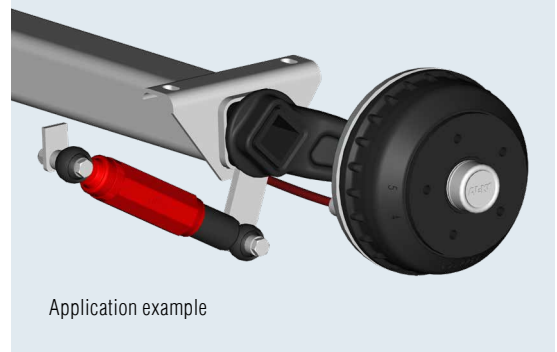
SIMPLE INSTALLATION

- I The rubber-mounted articulation connection eyes permit a low-wear, stress-free installation position at an angle of up to 5°.
- I In contrast to commercially available shock absorbers, AL-KO Octagon shock absorbers have their bolts firmly integrated into the shock absorber eye, which means they are part of a shock absorber's scope of delivery along with the nuts.



AXLE SHOCK ABSORBER

Ordering overview

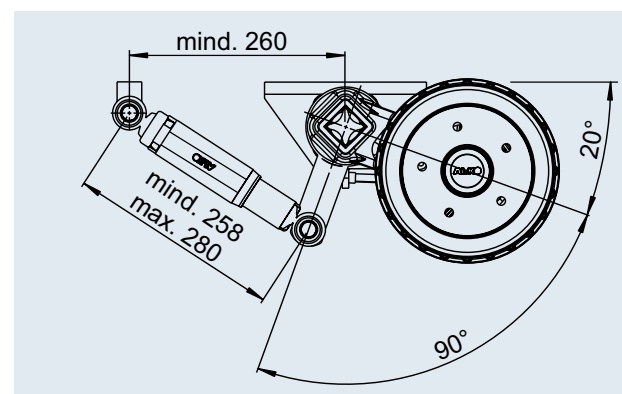
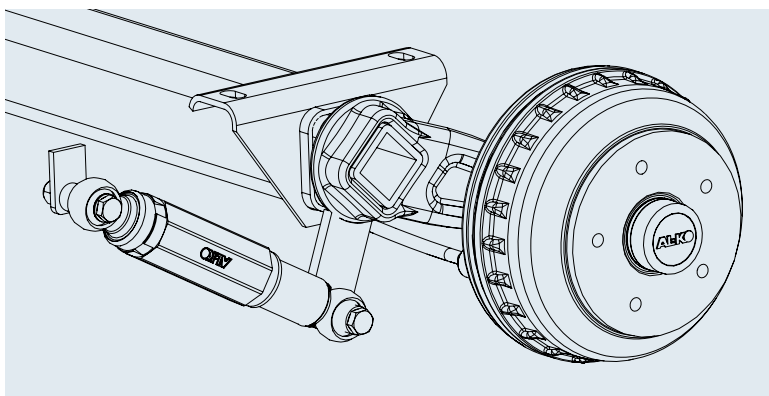


Application example

SAP: RADSTOSSDAEMPFER OCTAGON

Shock absorber	Version part no.	for AL-KO axles	Single axle up to	Tandem axle up to	Colour	with articulation connection eyes	with fixing bolts			
	Octagon PLUS 244 084	Trailing arm	up to 900 kg	up to 1,600 kg	green	yes	yes	1.3	–	350
	Octagon PLUS reinforced* 1 204 542	Trailing arm	up to 900 kg	up to 1,600 kg	green	yes	yes	1.3	–	350
	Octagon PLUS 244 085	Trailing arm	up to 1,350 kg	up to 2,700 kg	blue	yes	yes	1.3	–	350
	Octagon PLUS reinforced* 1 204 589	Trailing arm	up to 1,350 kg	up to 2,700 kg	blue	yes	yes	1.3	–	350
	Octagon PLUS 244 086	Trailing arm	up to 2,000 kg	up to 3,500 kg	red	yes	yes	1.3	–	350
	Octagon PLUS reinforced* 1 204 590	Trailing arm	up to 2,000 kg	up to 3,500 kg	red	yes	yes	1.3	–	350
	Universal COMPACT 282 259	Trailing arm	up to 1,500 kg	up to 3,000 kg	black	yes	yes	1.0	–	350

*Certain mechanical components (e.g. cylinders) that could be destroyed if overloaded are reinforced. The stroke and length dimensions as well as damping forces have not been changed.



SCOPE OF SUPPLY

| **Shock absorber:** Per axle, please order:
per set or 2x shock absorbers loose incl. fixing bolts.

| **Shock absorber brackets** for AL-KO axles for welding on (1312 110):
Please order 1 set or 2 shock absorber brackets per axle.

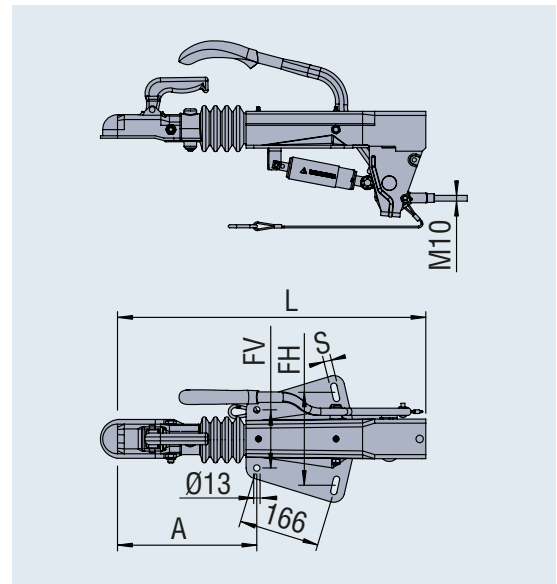


SURFACE TREATMENT

Shock absorber epoxy paint
(powder-coated)

OVERRUN DEVICES V (TOWBAR CONNECTION PARTS)

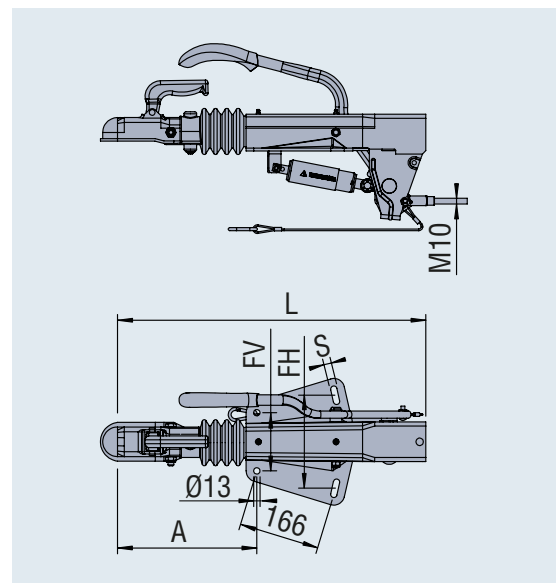
ZAF, permitted gross weight 750 kg up to 2,000 kg



SAP: AE KPL ZAF 1,6-3 A.1,5 130_167-210

ZAF 1.6-3

Part No.	Permitted gross weight in kg	Permitted nose load in kg	Dimensions [mm]						Design Drawbar installation	ECE test code	Weight in kg
			A	L	FH	FH2	FV	S			
4014261	750-1,500	100	292	640	167-210	-	130	13	top/bottom	E1 55R-012051	14.2



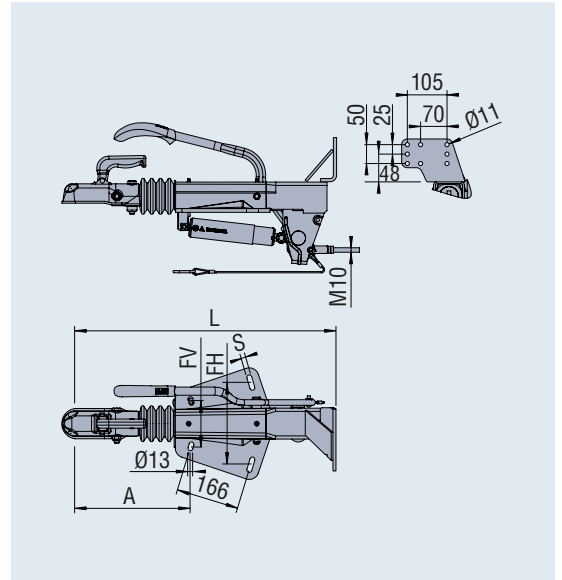
SAP: ZUGLEITUNG KPL ZAF 2,0-3

ZAF 2.0-3

Part No.	Permitted gross weight in kg	Permitted nose load in kg	Dimensions [mm]						Design Drawbar installation	ECE test code	Weight in kg
			A	L	FH	FH2	FV	S			
4014343	1,250-2,000	150	287	635	167-210	-	130	13	top/bottom	E1 55R-012078	15.5

OVERRUN DEVICES V (TOWBAR CONNECTION PARTS)

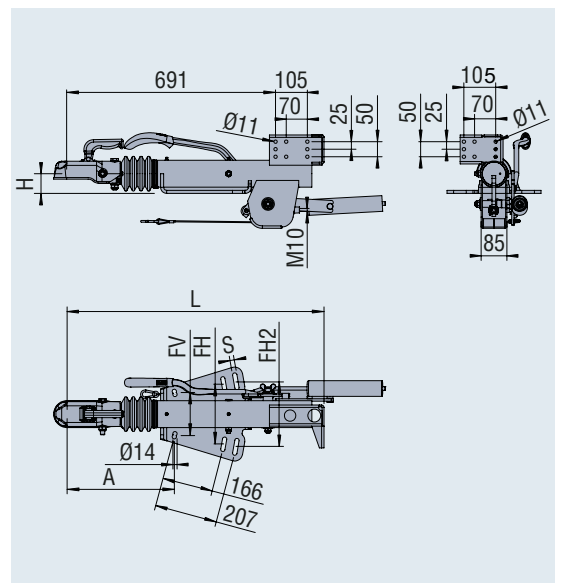
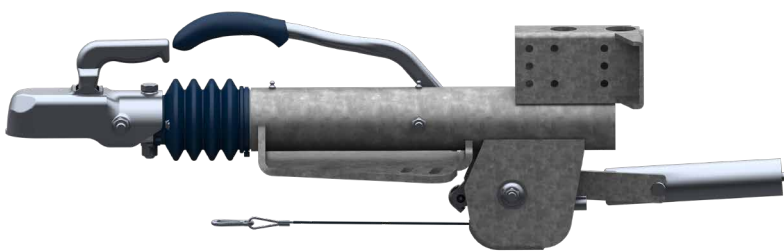
ZAF, permitted gross weight 1,800 kg up to 3,500 kg



SAP: ZUGEINRICHTUNG KPL ZAF 3,0-3 AUSF. 2.8

ZAF 3.0-3

Part No.	Permitted gross weight in kg	Permitted nose load in kg	Dimensions [mm]						Design Drawbar installation	ECE test code	Weight in kg
			A	L	FH	FH2	FV	S			
4014425	1,800-2,800	150	305	690	167-223	-	130	13	top/bottom	E1 55R-012028	21.1



SAP: ZUGEINRICHTUNG KPL ZAF 3,5-3

ZAF 3.5-3

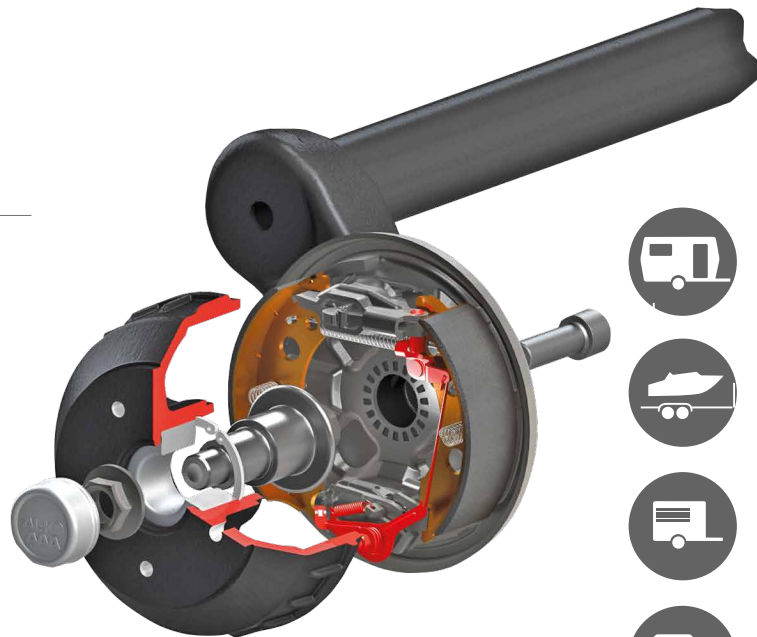
Part No.	Permitted gross weight in kg	Permitted nose load in kg	Dimensions [mm]						Design Drawbar installation	ECE test code	Weight in kg
			A	L	FH	FH2	FV	S			
4014465	2,500-3,500	150	358	851	166-233	175-258	130-150	14	top	E1 55R-010976	29.5

AL-KO AAA PREMIUM BRAKE

The high-performance brake

THE PREMIUM BRAKE THAT ADJUSTS AUTOMATICALLY

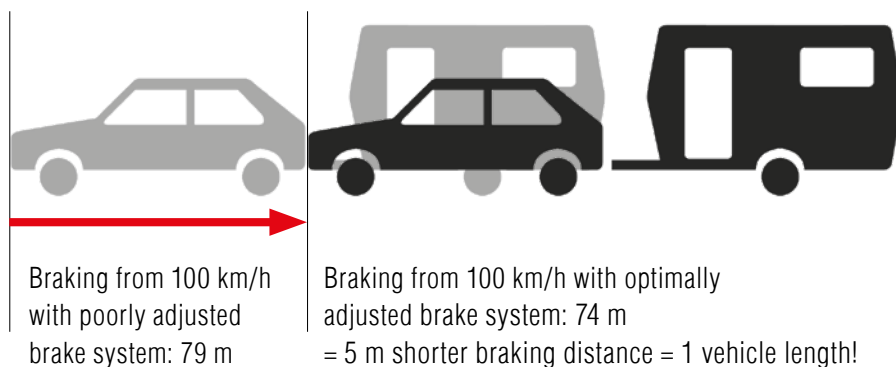
- | Suitable for AL-KO wheel brakes, and thus for most trailers with AL-KO axles
- | The proven wheel brakes with their braking values far above the average are supplemented by the automatic adjustment function
- | When driving in reverse, adjustment is deactivated to prevent the brake from locking up
- | Simple changeover to the latest technology thanks to a pre-assembled system (AL-KO screw system)



BRAKING DISTANCE IS TIME

As soon as the brake has excess play, the AAA automatically readjusts. This means the brake system is always optimally adjusted, so you save valuable braking distance in a dangerous situation.

E.g. car with caravan, permissible gross weight 1,500 kg:



THE ADVANTAGES FOR YOU

- | **Greater driving safety** thanks to an up to 5 m shorter braking distance
- | **Greater ride comfort** through smooth braking without jolting when setting off
- | **Lower maintenance costs** due to extended service intervals and dispensing with the first workshop visit after 1,000 km
- | No renewed presentation to TÜV required following installation
- | **Tip:** Change over to the AAA Premium Brake the next time you change your brake linings, if not before



AL-KO

QUALITY FOR LIFE

Member of **DEXKO**
G L O B A L

ALOIS KOBER GMBH

Ichenhauser Str. 14
89359 Kötz
Germany
Phone: +49 8221 97-0
info@alko-tech.com
www.alko-tech.com

AL-KO TECHNOLOGY PADERBORN GMBH

Pater-Ewald-Straße 29
33104 Paderborn
Germany
Phone: +49 5254 803-0
info15@alko-tech.com
www.alko-tech.com